

6-3-6 1:1 Links

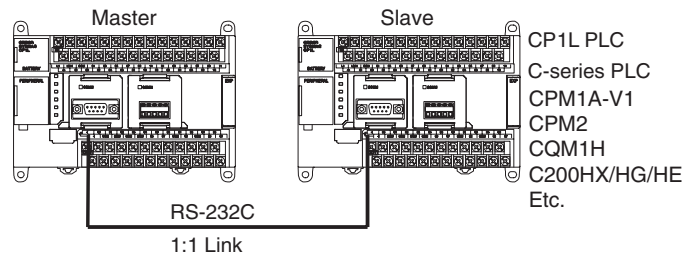
Two PLCs can be connected through their RS-232C ports to create Link Areas.

Applicable PLCs

A 1:1 Link can be create between any of the following SYSMAC PLCs: CP1L, CQM1H, C200HX/HG/HE(-Z), CPM1A-V1, CPM2A, CPM2B, CPM2C, and SRM1(-V2)

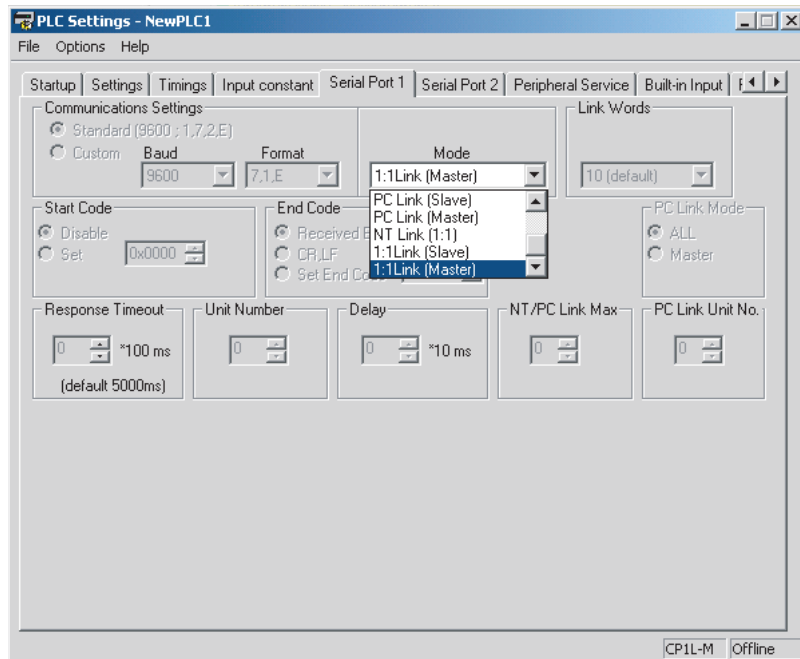
Connections

To create a 1:1 Link, connect the RS-232C ports on the two PLCs.



PLC Setup

Set the PLC to a 1:1 Link Master or a 1:1 Link Slave in the PLC Setup. Set the other PLC to the opposite setting.

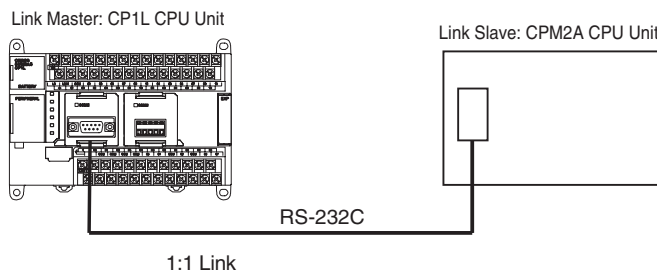


Link Area Size

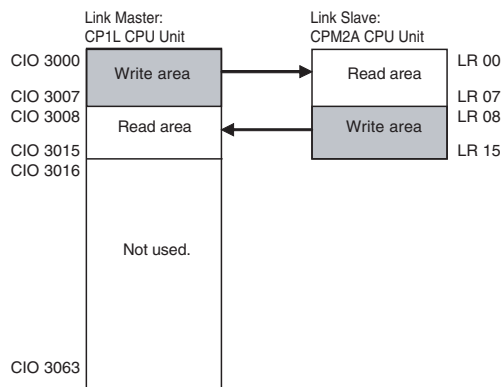
The 1:1 Link Area in the CP1L is from CIO 3000 to CIO 3015 (16 words). Even if a 1:1 Link is created with a CQM1H or C200HX/HG/HE(-Z) PLC, the 1:1 Link Area will be only 16 words on both sides of the link, and only LR 00 to LR 15 will be used in the CQM1H or C200HX/HG/HE(-Z) PLC. LR 16 to LR 63 cannot be used for 1:1 Links

Operation

Here, operation is described assuming that the master is the CP1L and the slave is the CPM2A.



1:1 Link Area

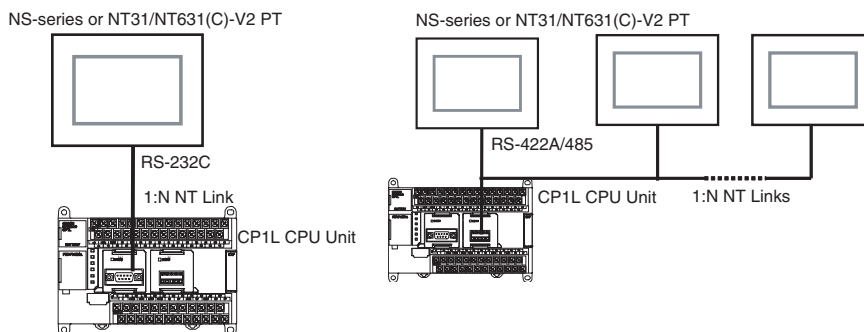


CP1L is set as the link master, so CIO 3000 to CIO 3007 are its write area. Any data written to these words with the OUT or MOV instructions will be automatically transferred to LR 00 to LR 07 in the CPM2A. The CPM2A will use these words as its read area.

CIO 3008 to 3015 are the read area of the CP1L. The contents of LR 08 to LR 15 in the CPM2A will automatically be transferred to CIO 3008 to 3015 in the CP1L. The words in the PLC's read area cannot be written using the OUT, MOV, or any other write instructions.

6-3-7 1:N NT Links

In the CP Series, communications are possible with PTs (Programmable Terminals) using NT Links in 1:N mode.



Note Communications are not possible using the 1:1-mode NT Link protocol.

High-speed NT Links are possible in addition to the previous standard NT Links by using the PT system menu and the following PLC Setup. High-speed NT Links are possible, however, only with NS-series PTs or with the NT31(C)-V2 or NT631(C)-V2 PTs.